

# Product Trial Report

GROWER DETAILS	FIELD DETAILS	PLANTING/HARVEST DETAILS	Total Acre Final Report
<b>Grower:</b>	<b>Total Acres:</b> 112.47	<b>Crop:</b> Corn	<b>Report Date:</b> 11/13/2024
<b>City &amp; State:</b> Aurora, IA	<b>Soil Type:</b> Please see Soil Type Map	<b>Plant Date:</b> 04/24/2024	<b>Harvest Year:</b> 2024
<b>Zip Code:</b> 50607	<b>Title:</b> Spot Tile	<b>Row Spacing:</b> 30"	<b>Crop:</b> Corn
	<b>Irrigation:</b> None	<b>Planting Depth:</b> 2.50	<b>Trial Name:</b> DgradeR Spring Application Trial
	<b>Fall Tillage:</b> Strip Till	<b>Harvest Date:</b> 10/19/2024	<b>Trial Type:</b> Preplant
	<b>Previous Crop:</b> Corn	<b>Hybrid:</b> 70F6Q	
		<b>Seed Company:</b> NuTech Seed	
		<b>Population:</b> 34000	

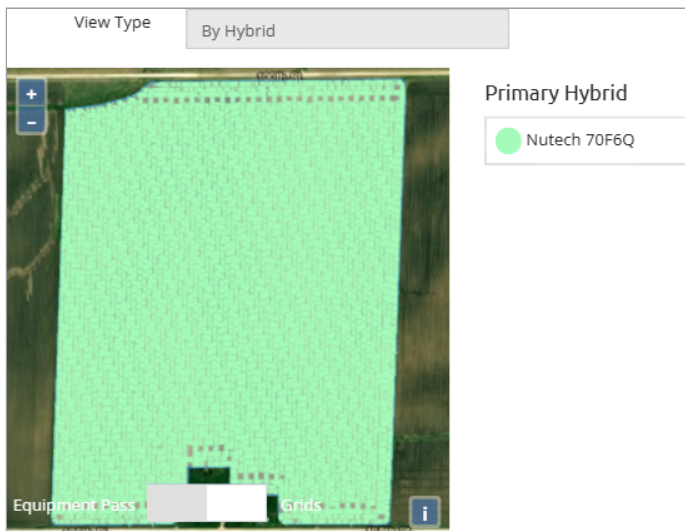
## Field Map



## Soil Type



## Planting Map



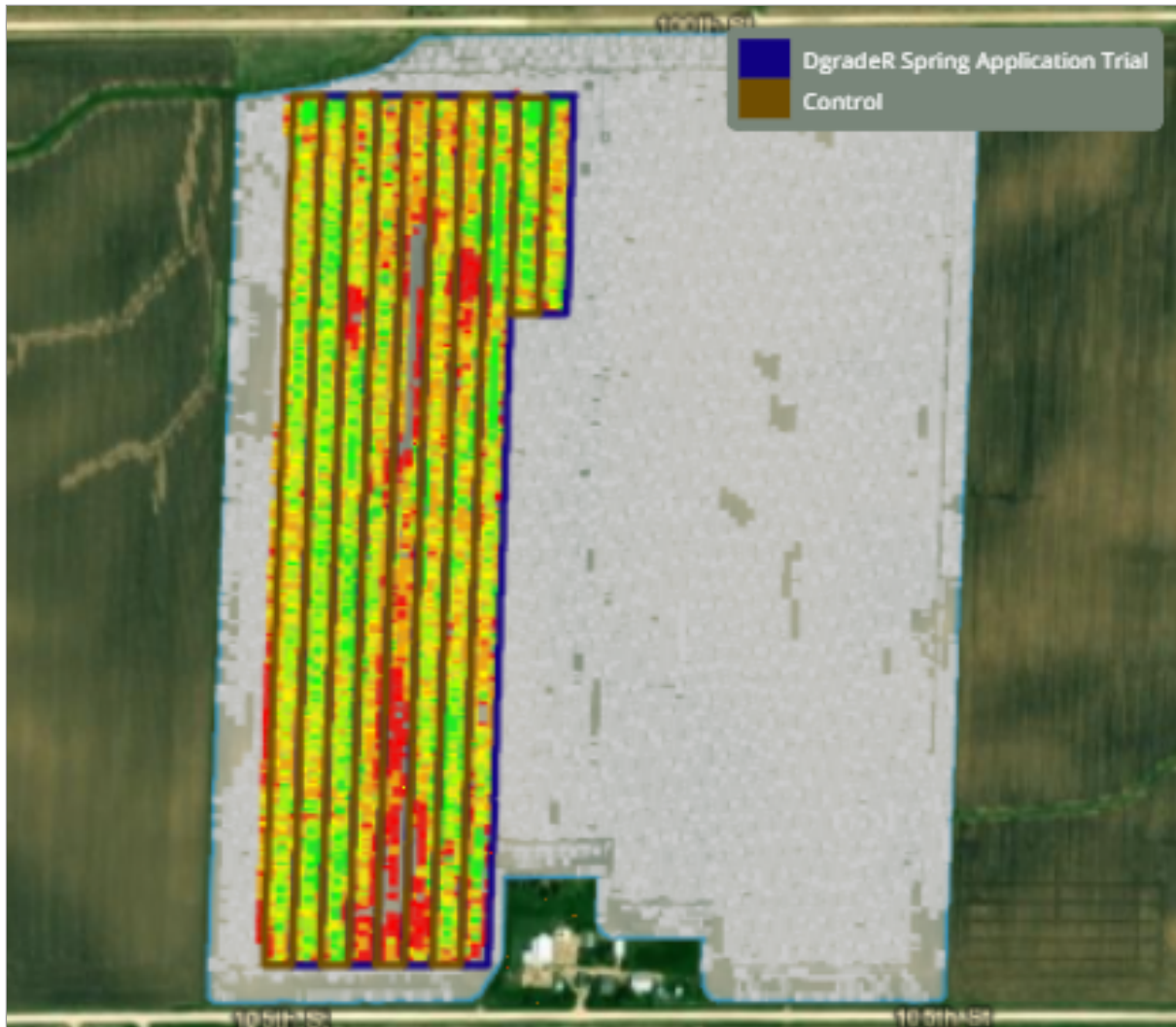
## Trial Zones



# Product Trial Report

## Yield Results Data

### High Level Yield Heat Map



This data was filtered based on  $-1.5 / +2$  St Dev

Yield Summary BPA	
<i>Location</i>	<i>Yield</i>
DgradeR Spring Application Trial	237.09
Control	235.92
<b>Yield Response</b>	1.17

Yield Values	
●	170.7 - 217.8
●	217.8 - 233.4
●	233.4 - 242.4
●	242.4 - 254.3
●	254.3 - 299.1

# Product Trial Report

## Product Trial Comments:

This corn after corn product trial had a +1.17 bushel/acre yield response using the -1.5/+2 Standard Deviation measurement method to tighten yield data points. Mike Jenks reported a projected 20% yield loss due to flooding/drainage issues from significant rain events early in the growing season

## Application Date and Details:

**2023 Crop:** Corn

**Application Date:** 4/10/24

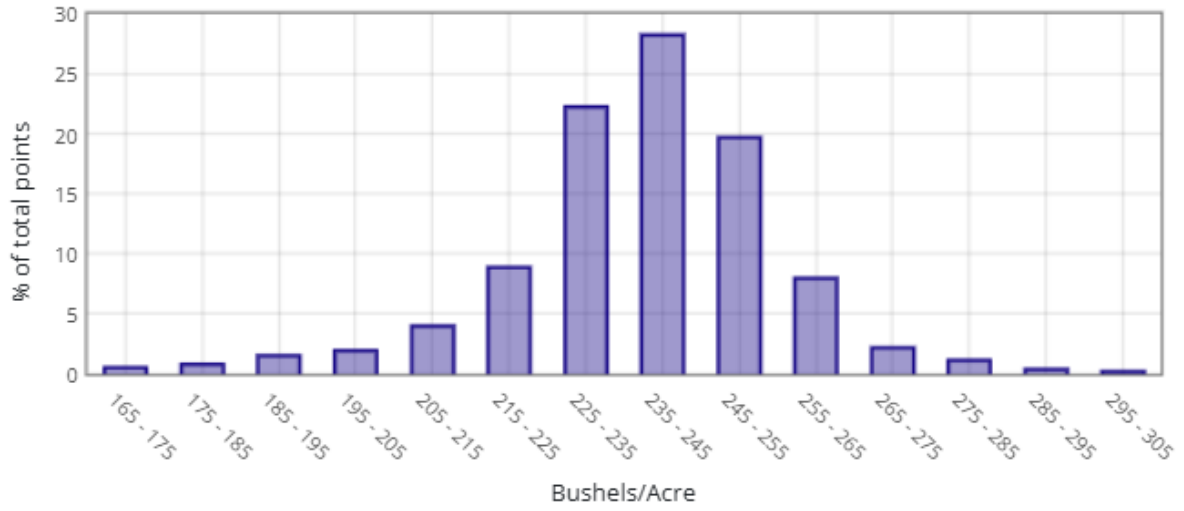
**Application Method:** Sprayer Broadcast

**Product Application Rate/Acre:** DgradeR = 48 oz., Dry Spray Grade AMS = 2 lbs.

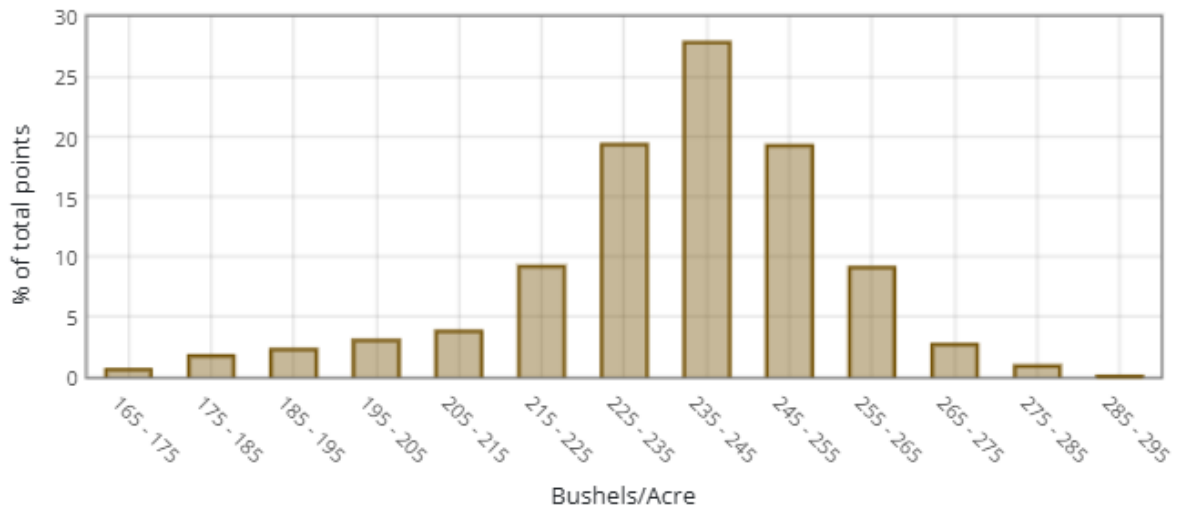
**Tank Mix Rate/Acre:** 20 gallons

# Product Trial Report

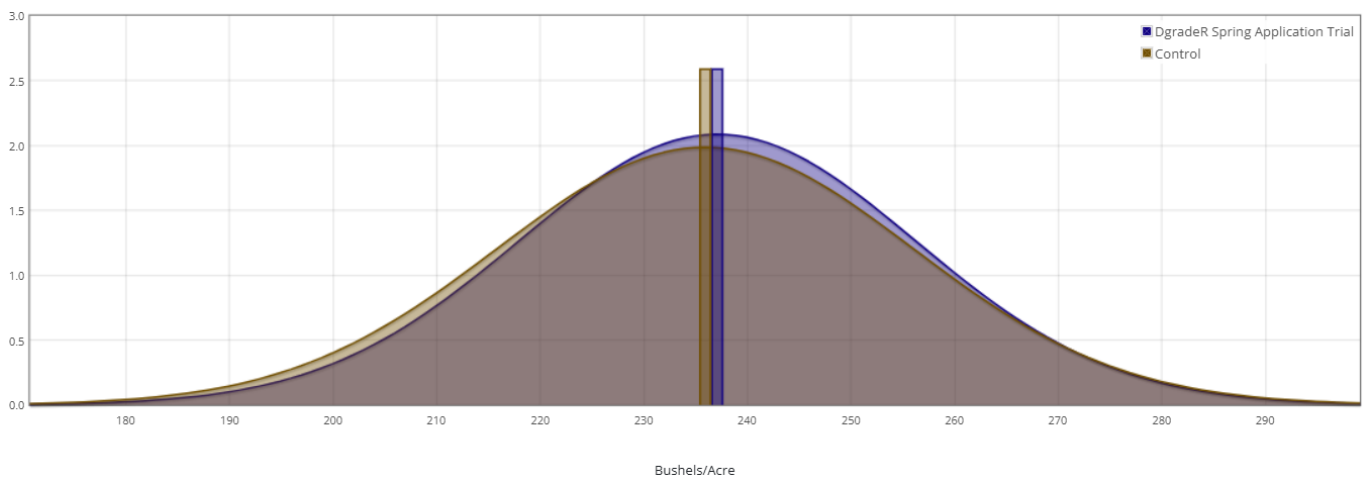
## DgradeR Spring Application Trial



## Control



## Normal Curve Distribution



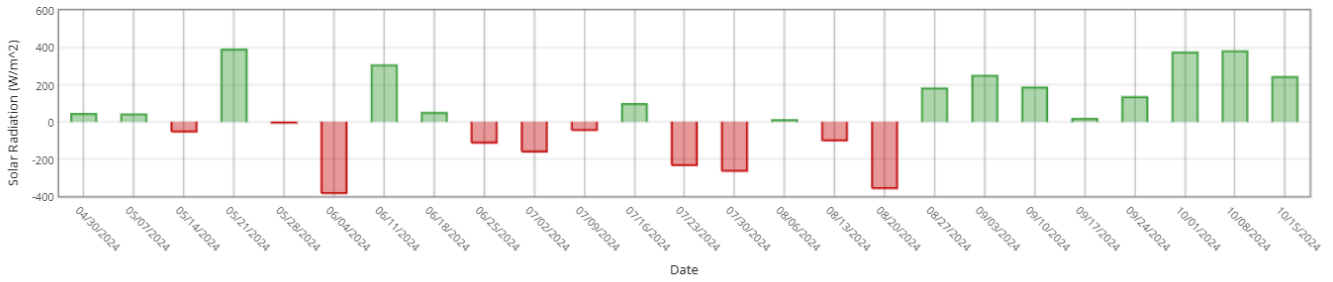
# Product Trial Report

## Trial Location Weather Data vs 5 Yr Avg

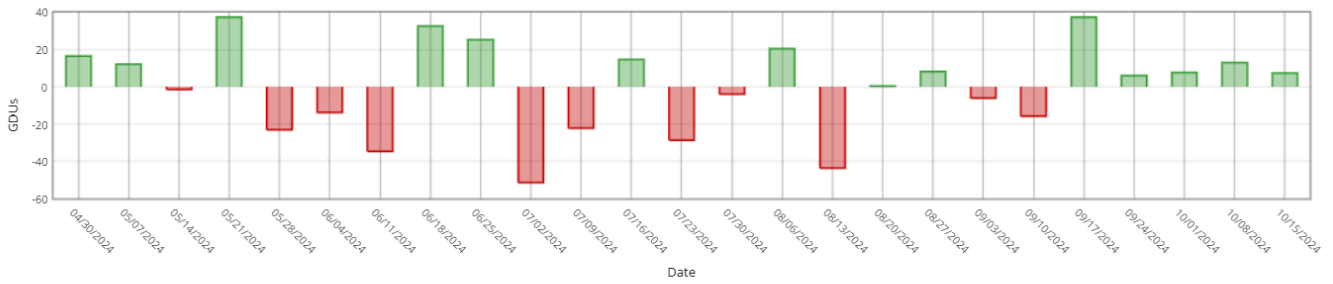
Historical Averages based on past  years

Cumulative  Week over Week

### Sunlight



### Heat (GDUs)



### Rain

